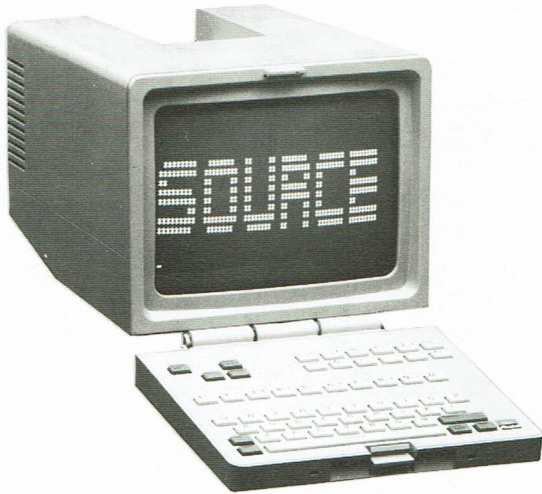


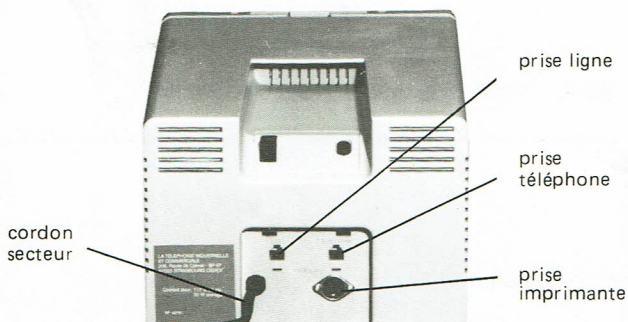
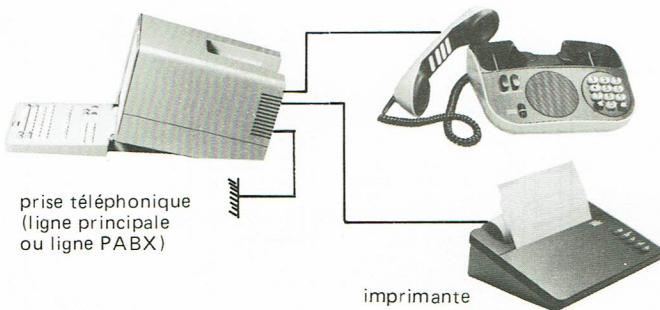
Terminal personnel d'information

(normes U.S.)



| Dimensions | |
|------------|---------|
| Longueur | : 22 cm |
| Hauteur | : 18 cm |
| Profondeur | : 28 cm |
| Poids | : 5 kg |

SIMPLICITE DE RACCORDEMENT



PRESENTATION GENERALE

- terminal géré par microprocesseur
- modem intégré
- connexion directe à une ligne téléphonique
- clavier rabattable assurant une protection de l'écran
- coffret compact à encombrement très réduit

ECRAN

- taille : 23 cm en diagonale (9 pouces)
- noir et blanc
- réglage luminosité
- fréquence de rafraîchissement : 60 Hz

JEU DE CARACTERES

- affichable : 96 codes ASCII) voir au verso
- généré : 128 codes ASCII)

FORMAT D'AFFICHAGE

- nombre de lignes : 16
- nombre de colonnes : 64
- capacité de l'écran : 1024
- définition de chaque caractère : 7 lignes de 5 points dans une matrice 10 lignes de 6 points

CURSEUR

- double soulignage et clignotement

MODE D'AFFICHAGE

- caractère par caractère
- une page de mémoire
- passage automatique à la ligne suivante en cas de dépassement
- défilement

CLAVIER

- clavier alphanumérique QWERTY de 58 touches
- technologie : touches à rappel magnétique
- génération des caractères de contrôle ASCII

INTERFACE ET COMMUNICATION

- modem : . compatible BELL 103
- . non réversible
- . vitesse : 300 bauds
- . mode full duplex
- . codage : 7 bits de données, 1 bit start, 1 bit stop, 1 bit de parité
- sortie imprimante : vitesse 300 bauds, connecteur DIN 3 broches
- interface de ligne : branchement par connecteur standard RJ 11

ALIMENTATION

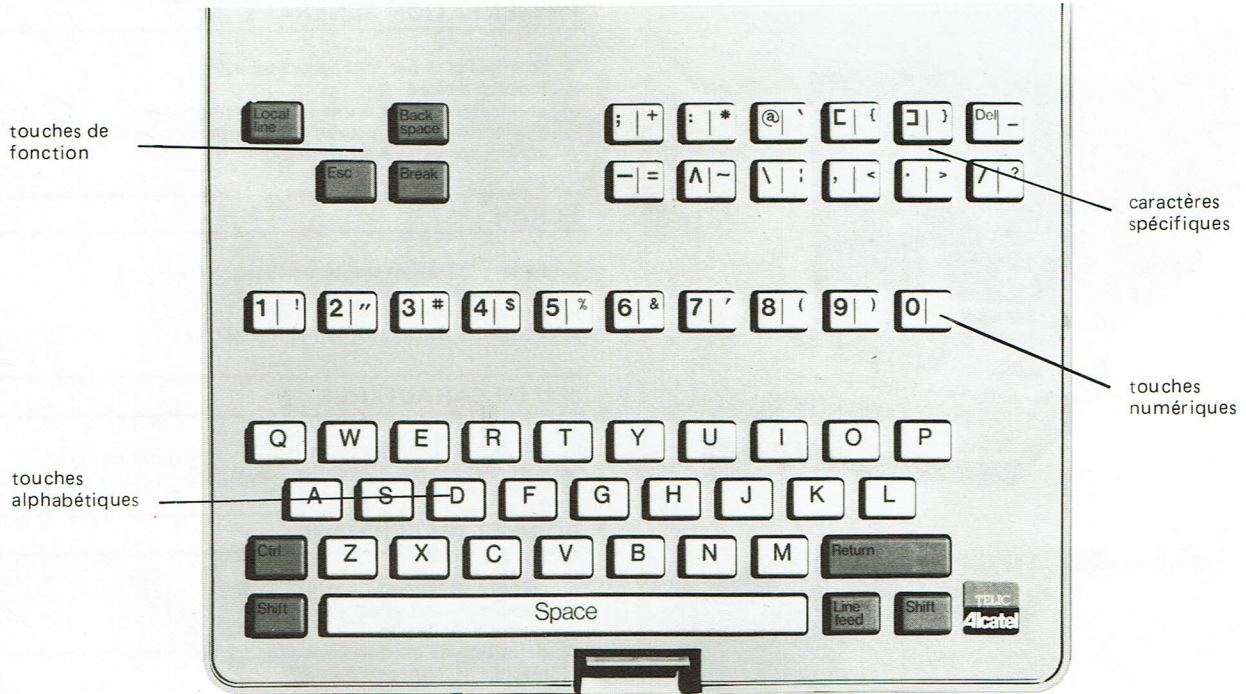
- 117 volts \pm 10 %, 60 Hz, 35 W

ENVIRONNEMENT

- fonctionnement : +5° C à +40° C
- stockage : -30° C à +70° C
- humidité relative : 5 % à 85 % sans condensation

Terminal personnel d'information (normes U.S.)

DESCRIPTION DU CLAVIER



RAPPEL DE LA CODIFICATION ASCII

| Octal | Parity Space or | Hex | Character | Control Keybd. Equiv. | Alternate Code Names | Octal | Parity Space or | Hex | Character | Alternates | Octal | Parity Space or | Hex | Character | Alternates | Octal | Parity Space or | Hex | Character | Alternates |
|-------|-----------------|-----|-----------|-----------------------|--------------------------------|-------|-----------------|-----|-----------|--------------|-------|-----------------|-----|-----------|---------------------|-------|-----------------|-----|-----------|-------------------------|
| 000 | Even | 00 | NUL | @ | NUL, CTRL SHIFT P, TAPE LEADER | 040 | Odd | 20 | SP | SPACE, BLANK | 100 | Odd | 40 | @ | SHIFT P | 140 | Even | 60 | | ACCENT GRAVE |
| 001 | Odd | 01 | SOH | A | START OF HEADER, SOM | 041 | Even | 21 | ! | | 101 | Even | 41 | A | | 141 | Odd | 61 | a | |
| 002 | Odd | 02 | STX | B | START OF TEXT, EOA | 042 | Even | 22 | " | | 102 | Even | 42 | B | | 142 | Odd | 62 | b | |
| 003 | Even | 03 | ETX | C | END OF TEXT, EOM | 043 | Odd | 23 | # | | 103 | Odd | 43 | C | | 143 | Even | 63 | c | |
| 004 | Odd | 04 | EOT | D | END OF TRANSMISSION, END | 044 | Even | 24 | \$ | | 104 | Even | 44 | D | | 144 | Odd | 64 | d | |
| 005 | Even | 05 | ENO | E | ENQUIRY, WRU, WHO ARE YOU | 045 | Odd | 25 | % | | 105 | Odd | 45 | E | | 145 | Even | 65 | e | |
| 006 | Even | 06 | ACK | F | ACKNOWLEDGE, RU, ARE YOU | 046 | Odd | 26 | & | | 106 | Odd | 46 | F | | 146 | Even | 66 | f | |
| 007 | Odd | 07 | BEL | G | BELL | 047 | Even | 27 | ' | APOSTROPHE | 107 | Even | 47 | G | | 147 | Odd | 67 | g | |
| 010 | Odd | 08 | BS | H | BACKSPACE, FEO | 050 | Even | 28 | (| | 110 | Even | 48 | H | | 150 | Odd | 68 | h | |
| 011 | Even | 09 | HT | I | HORIZONTAL TAB, TAB | 051 | Odd | 29 |) | | 111 | Odd | 49 | I | LETTER I | 151 | Even | 69 | i | |
| 012 | Even | 0A | LF | J | LINE FEED, NEW LINE, NL | 052 | Odd | 2A | * | | 112 | Odd | 4A | J | | 152 | Even | 6A | j | |
| 013 | Odd | 0B | VT | K | VERTICAL TAB, VTAB | 054 | Odd | 2C | , | COMMA | 114 | Odd | 4C | L | | 154 | Even | 6C | l | |
| 014 | Even | 0C | FF | L | FORM FEED, FORM, PAGE | 055 | Even | 2D | - | MINUS | 115 | Even | 4D | M | | 155 | Odd | 6D | m | |
| 015 | Odd | 0D | CH | M | CARRIAGE RETURN, EOL | 056 | Even | 2E | . | | 116 | Even | 4E | N | | 156 | Odd | 6E | n | |
| 016 | Odd | 0E | SO | N | SHIFT OUT, RED SHIFT | 057 | Odd | 2F | / | | 117 | Odd | 4F | O | LETTER O | 157 | Even | 6F | o | |
| 017 | Even | 0F | SI | O | SHIFT IN, BLACK SHIFT | 060 | Even | 30 | 0 | NUMBER ZERO | 120 | Even | 50 | P | | 160 | Odd | 70 | p | |
| 020 | Odd | 10 | DLE | P | DATA LINK ESCAPE, DCO | 061 | Odd | 31 | 1 | NUMBER ONE | 121 | Odd | 51 | Q | | 161 | Even | 71 | q | |
| 021 | Even | 11 | DC1 | Q | XON, READER ON | 062 | Odd | 32 | 2 | | 122 | Odd | 52 | R | | 162 | Even | 72 | r | |
| 022 | Even | 12 | DC2 | R | TAPE, PUNCH ON | 063 | Even | 33 | 3 | | 123 | Even | 53 | S | | 163 | Odd | 73 | s | |
| 023 | Odd | 13 | DC3 | S | XOFF, READER OFF | 064 | Odd | 34 | 4 | | 124 | Odd | 54 | T | | 164 | Even | 74 | t | |
| 024 | Even | 14 | DC4 | T | TAPE, PUNCH OFF | 065 | Even | 35 | 5 | | 125 | Even | 55 | U | | 165 | Odd | 75 | u | |
| 025 | Odd | 15 | NAK | U | NEGATIVE ACKNOWLEDGE, ERR | 066 | Even | 36 | 6 | | 126 | Even | 56 | V | | 166 | Odd | 76 | v | |
| 026 | Odd | 16 | SYN | V | SYNCHRONOUS IDLE, SYNC | 067 | Odd | 37 | 7 | | 127 | Odd | 57 | W | | 167 | Even | 77 | w | |
| 027 | Even | 17 | ETB | W | END OF TEXT BUFFER, LEM | 070 | Odd | 38 | 8 | | 130 | Odd | 58 | X | | 170 | Even | 78 | x | |
| 030 | Even | 18 | CAN | X | CANCEL, CANCL | 071 | Even | 39 | 9 | | 131 | Even | 59 | Y | | 171 | Odd | 79 | y | |
| 031 | Odd | 19 | EM | Y | END OF MEDIUM | 072 | Even | 3A | : | | 132 | Even | 5A | Z | | 172 | Odd | 7A | z | |
| 032 | Odd | 1A | SUB | Z | SUBSTITUTE | 073 | Odd | 3B | ; | | 133 | Odd | 5B | [| SHIFT K | 173 | Even | 7B | [| |
| 033 | Even | 1B | ESC | [| ESCAPE, PREFIX | 074 | Even | 3C | < | LESS THAN | 134 | Even | 5C | \ | SHIFT L | 174 | Odd | 7C | \ | VERTICAL SLASH ALT MODE |
| 034 | Odd | 1C | FS | \ | FILE SEPARATOR | 075 | Odd | 3D | = | | 135 | Odd | 5D |] | SHIFT M | 175 | Even | 7D |] | (ALT MODE) |
| 035 | Even | 1D | GS |] | GROUP SEPARATOR | 076 | Odd | 3E | > | GREATER THAN | 136 | Odd | 5E | ^ | SHIFT N | 176 | Even | 7E | ^ | DEL |
| 036 | Even | 1E | RS | ^ | RECORD SEPARATOR | 077 | Even | 3F | ? | | 137 | Even | 5F | _ | SHIFT O, UNDERSCORE | 177 | Odd | 7F | _ | DELETE, RUBOUT |
| 037 | Odd | 1F | US | _ | UNIT SEPARATOR | | | | | | | | | | | | | | | |

Pour toute information complémentaire, vous êtes cordialement invités à prendre contact avec les services commerciaux de TELIC - ALCATEL

Direction des Ventes Terminaux

M. Jean-Michel BARBIER
102, Rue du Point-du-Jour
92100 BOULOGNE (FRANCE)
Tél. (1) 609.94.01 - Télex 260026

Personal information terminal

French videotex standard



| Dimensions | | |
|------------|-------|---------|
| Length | 22 cm | 8.7 ins |
| Height | 18 cm | 7.1 ins |
| Depth | 28 cm | 11 ins |
| Weight | 5 kg | 11 Lbs |

GENERAL DESCRIPTION

- microprocessor controlled terminal
- integrated modem
- direct connection to telephone line
- unique folding keyboard providing full screen protection
- light weight compact presentation

SCREEN

- size : 9 inch (23 cm) diagonal
- black and white
- brightness and contrast controls

VIDEOTEX CHARACTER SET

- number of characters : 127 (see overleaf)
- character attributes
 - . single or double height
 - . single or double width
 - . positive / negative
 - . flashing
 - . overlying
 - . masking
 - . lining
 - . 8 grey tone levels (character or background)

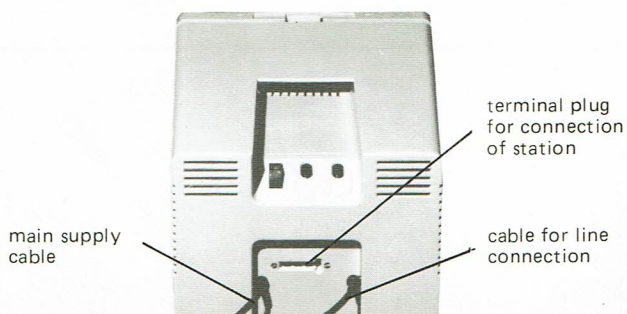
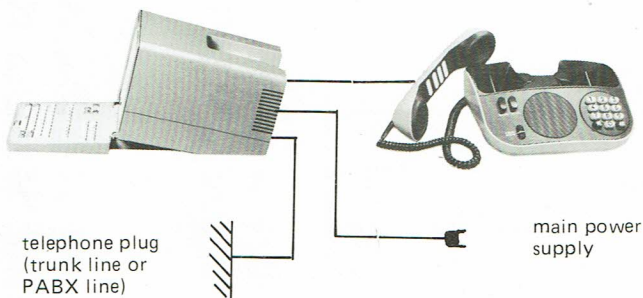
DISPLAY FORMAT

- number of lines : 25
- number of columns : 40
- screen capacity : 1000 characters
- character definition : 7 lines of 5 points each on a 10 line 6 point matrix

CURSOR

- character mode : background colour opposite to character colour
- graphic mode : dual graphic form

EASE OF CONNECTION



DATA DISPLAY MODE

- character by character
- one page memory

KEYBOARD

- number of alphanumeric keys : 55
- technology : advanced magnetic key return

TRANSMISSION

- modem :
 - . receive : 1200 bauds / transmit : 75 bauds
 - . type CCITT V 23
 - . on-site modem test
- line interface : . 3 m cord with standard PTT connector

POWER SUPPLY

- 220 volts \pm 10 %, 50 Hz, 35 W

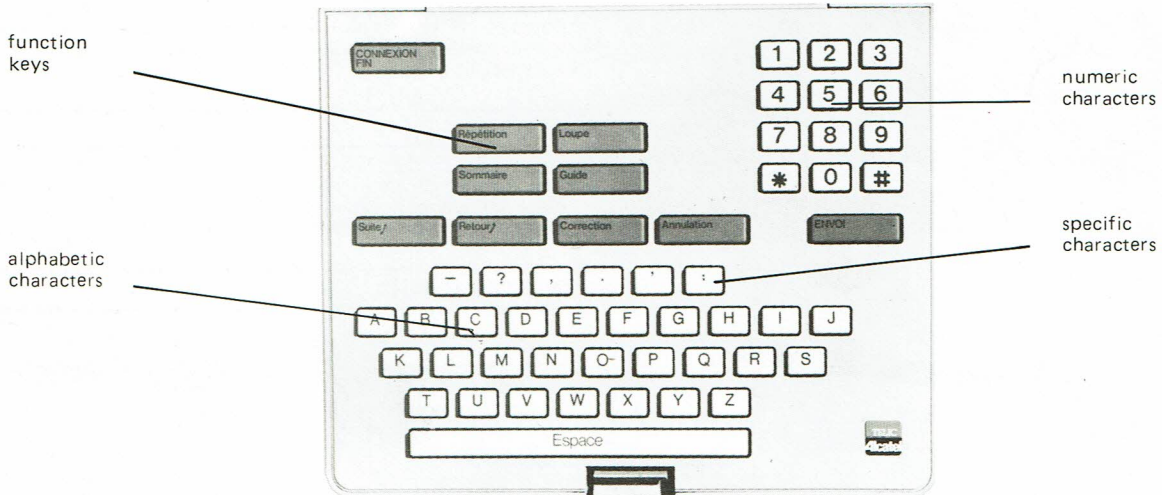
ENVIRONMENT

- operating : +5° C to +40° C
- storage : -30° C to +70° C
- relative humidity: 5 % to 85 % with no condensation

Personal information terminal

French videotex standard

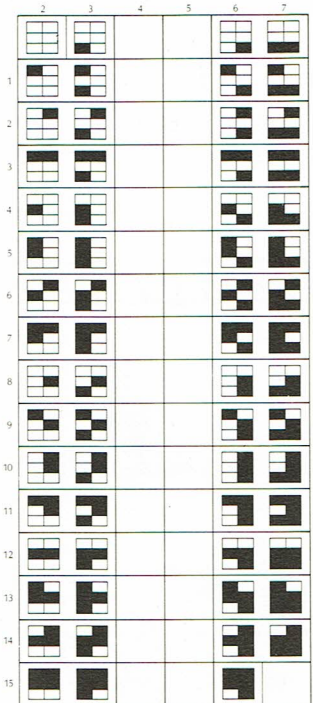
KEYBOARD DESCRIPTION



SET OF ALPHABETIC AND GRAPHIC CHARACTERS

The alphabetic characters necessary for operating Videotex in France are the following :

- 26 upper case characters (A – Z)
- 26 lower case characters (a – z)
- 8 upper case accented letters
- 13 lower case accented letters
- 10 numbers (0 – 9)
- 1 space (SP)
- 2 currency symbols (₣ and \$)
- 1 error symbol (⊘)
- 3 fractions (1/2 1/4 3/4)
- 13 graphic signs (arrows, braces . . .)
- 24 punctuation signs :
 - . exclamation mark, question mark (! ?)
 - . full stop, comma, colon, semi-colon (. , ; :)
 - . plus, minus, plus minus (+ - ±)
 - . smaller than, greater than, equal (< > =)
 - . division sign, oblique (÷ /)
 - . degree, per cent (° %)
 - . apostrophe, quote marks (' ")
 - . barred sign, asterisk (# *)
 - . and, commercial at (& @)
 - . parentheses ()



CHARACTER ATTRIBUTES

| Attributes defined by | Belonging to set | | |
|-----------------------|---------------------------------------------------------------------------------------------------------------------------------------------------------------------------------------|---------------------------------------------------------------------------------------------------------------|----------------------------------------------------------------------------------------------------------------------------------------------------------|
| | alphabetic | semi-graphic | String delimiter |
| Character | <ul style="list-style-type: none"> . flashing . character leight . character width . positive / negative . transparent back ground | <ul style="list-style-type: none"> . flashing . background colour . disjoint | <ul style="list-style-type: none"> . background colour of the following string . masking . overlaying . lining |
| String | <ul style="list-style-type: none"> . background colour . masking . overlaying . underlining | <ul style="list-style-type: none"> . masking . overlaying | |

For further information you are cordially invited to contact TELIC – ALCATEL

Direction des Ventes Terminaux

M. Jean-Michel BARBIER
 102, Rue du Point-du-Jour
 92100 BOULOGNE (FRANCE)
 Tel. (1) 609.94.01 – Telex 260026